

Rhino

Hydraulic Guillotines

Easy to Operate, Affordable
Hydraulic Guillotines



Rhino Hydraulic Guillotines

Enhance your metal-cutting operations with our advanced Hydraulic Guillotines, designed to meet your requirements. Available in various sizes, from 2000 x 4 mm to 3200 x 6 mm, with custom dimensions available on request, these machines offer unmatched versatility. Combining exceptional efficiency with robust safety features, each unit has a tiltable front finger guard and comprehensive hydraulic and electrical overload protection for reliable performance and operator security.

Experience unparalleled convenience with our single-handle blade clearance adjustment, enabling rapid and precise settings for seamless operation. Engineered with a fixed cutting angle and comprehensive guarding, our hydraulic guillotines deliver exceptional accuracy and reliability.

The advanced E21S Control system offers a highly programmable interface, capable of storing up to 40 programs with 25 steps each, streamlining your workflow for maximum efficiency.

Additional features include optoelectrical rear guards for enhanced safety, an electric footswitch for hands-free operation, and all necessary manuals for ease of use. Designed to run on a 400V/3PH/50Hz power supply, our Hydraulic Guillotines combine performance, reliability, and precision to deliver the ultimate metal-cutting solution.



Rhino Hydraulic Guillotines Popular Models below:

Model width (mm)	Thickness (mm) (Mild Steel)	Electrics
2000	4 or 6	400V/3PH/50Hz
2500	6,8,10 or 12	400V/3PH/50Hz
3200	6,8,10 or 12	400V/3PH/50Hz
4000	6,8,10 or 12	400V/3PH/50Hz

Our Most Affordable Hydraulic Guillotine

Unlock a new level of efficiency and productivity in your metal-cutting operations with our top-tier Hydraulic Guillotines. Designed for high performance and easy operation, these machines are your ultimate asset for achieving superior, precise cuts with minimal effort.

Boost your output and stay ahead of the competition—our Hydraulic Guillotines are not just machines, they’re game-changers for your business.

Industrial

Designed for demanding environments, our hydraulic guillotines are built to withstand heavy-duty use, making them ideal for industrial applications. Engineered with durable components, they deliver consistent performance and long-lasting reliability, even under continuous operation.

Robust Construction

Constructed with high-quality materials, our hydraulic guillotines offer exceptional stability and strength. The solid build minimises vibrations and ensures precise cutting every time, allowing you to handle a wide range of materials with confidence.

Easy Operation

User-friendly design is at the heart of our hydraulic guillotines. With straightforward controls and intuitive features, operators of all experience levels can quickly learn to use the machine efficiently. The ergonomic layout enhances safety while streamlining your cutting processes.

Rhino Hydraulic Guillotines - More Options

Model	Max. Shearing Thickness (mm)	Max. Shearing Width (mm)	Shearing Angle (°)	Number of stroke (mm)	Back gauge range (mm)	Motor power (kW)	Net weight (kg)	Dimensions (L*W*H)
QC12Y-4X2000	4	2000	1°30´	22	20-480	4	3200	2630*2030*1600
QC12Y-4X2500	4	2500	1°30´	20	20-480	4	3800	3130*2030*1600
QC12Y-4X3200	4	3200	1°30´	20	20-600	5.5	5600	3840*2175*1600
QC12Y-4X4000	4	4000	1°30´	18	20-600	5.5	7000	4640*2320*1600
QC12Y-6X2500	6	2500	1°30´	18	20-600	7.5	5200	3130*2320*1600
QC12Y-6X3200	6	3200	1°30´	16	20-600	7.5	6500	3840*2320*1620
QC12Y-6X4000	6	4000	1°30´	14	20-600	7.5	8500	4630*2495*1700
QC12Y-6X6000	6	6000	1°30´	6	20-600	11	16800	6645*2530*2250
QC12Y-8X2500	8	2500	1°30´	14	20-600	11	6200	3140*2345*1620
QC12Y-8X3200	8	3200	1°30´	12	20-600	11	7300	3850*2345*1620
QC12Y-8X4000	8	4000	1°30´	10	20-600	1	9600	4630*2495*1700
QC12Y-8X6000	8	6000	1°30´	6	20-900	15	17600	6650*2845*1700
QC12Y-12X2500	12	2500	1°30´	12	20-900	18.5	9600	3235*3050*2100
QC12Y-12X3200	12	3200	1°30´	10	20-900	18.5	12000	3945*3050*2100
QC12Y-12X4000	12	4000	1°30´	8	20-900	18.5	14500	4745*3210*2200
QC12Y-12X6000	12	6000	1°30´	5	20-900	22	29500	6745*3430*2300
QC12Y-16X2500	16	2500	2°	12	20-900	22	11600	3410*3230*2230
QC12Y-16X3200	16	3200	2°	10	20-900	22	14000	4120*3230*2230
QC12Y-16X4000	16	4000	2°	8	20-900	22	18000	4920*3330*2700
QC12Y-16X6000	16	6000	2°	6	20-900	37	43000	7100*3530*2700
QC12Y-20X2500	20	2500	2°30´	10	20-900	37	17500	3420*3330*2700
QC12Y-20X3200	20	3200	2°30´	8	20-900	37	25500	4180*3330*2700
QC12Y-20X4000	20	4000	2°30´	6	20-900	37	29000	4980*3480*2830
QC12Y-20X6000	20	6000	2°30´	4	20-900	75	56500	7180*3580*2830
QC12Y-25X2500	25	2500	2°30´	8	20-900	45	24000	3480*3430*2700
QC12Y-25X3200	25	3200	2°30´	8	20-900	45	32000	4180*3430*2700
QC12Y-25X4000	25	4000	2°30´	6	20-900	45	39500	4980*3580*2800
QC12Y-32X2500	32	2500	3°	6	20-900	55	33000	3760*4405*3150
QC12Y-32X3200	32	3200	3°	6	20-900	55	40500	4590*4405*3150

With our range **starting at only £16,000 plus VAT** our range of incredibly priced hydraulic guillotines offers customers an affordable entry point for their fabrication requirements.

Finance Options are available. Why not spread the cost of your machinery purchase? Our finance partner Percy Finance Ltd is an appointed representative of AFS Compliance Ltd which is authorised and regulated by the Financial Conduct Authority. Firm number 625035, Percy Finance Ltd is a franchisee of Asset Finance Solutions (UK) Ltd.

Easy to Operate

The E2IS Control System enhances operational efficiency with features like “Go To” positioning, programmable steps, a stock counter, one-side positioning, and a retract facility for increased productivity.

Safety Guards

Side fences, top fences, and opto-electrical guards protect against industrial hazards, with fences serving as physical barriers and opto-electrical guards using sensors to stop machinery if a beam is interrupted.

Squaring Arm

A 1000 mm squaring arm with a rule and flip-up stops provides precise measurement and positioning on our industrial mechanical guillotine, enabling accurate material alignment and repeatable cuts.

Front Support Arms

The 1000 mm front support arms provide stability and support for materials to aid in helping to ensure accurate and consistent cutting.

Electric Foot Control

The electric foot control allows hands-free operation of the industrial Hydraulic guillotine, enabling the operator to manage cutting functions safely and efficiently.

Rear Sheet Supports

Optional sheet supports and extended back gauges are available upon request.

Bed Infill Plates

Bed infill plates and ball transfer system for easy loading and cutting.

Ask About our Full Range of Fabrication Machinery Tools

CNC Press Brakes, Fibre Lasers, Hydraulic Folders...

Rhino

Swing-up Back Gauge Benefits
CE certified + side fences & Top fence with Opto-Electrical Guards
One off 1.0M Ruled Squaring Arm with tilting stop
Two off 1.0M Front Support Arms with tilting stop
One off 1.0M Ruled Front Support Arm with tilting stop
Tiltable Front Finger Guard
Bed infill plates with ball transfers
Hand Moveable Foot Pedal control including emergency stop
Rapid and precise blade clearance adjustment by single handle on the side frame
Fixed cutting angle
Hydraulic and Electrical overload protection
Cutting line illumination
Bed infill plates with ball transfers
E2IS Control: Programmable multiple steps can save up to 40 Programs 25 steps per program One Key backup/restore facility Holding, decompression time settings Stock Counter One side positioning Retract facility
Opto-electrical Rear Guards, Electric Footswitch, Manuals, 400V/3PH/50h

“High-quality build and an excellent feature set, this premium work Horse is an excellent choice”.



Swing Beam Action

Efficient

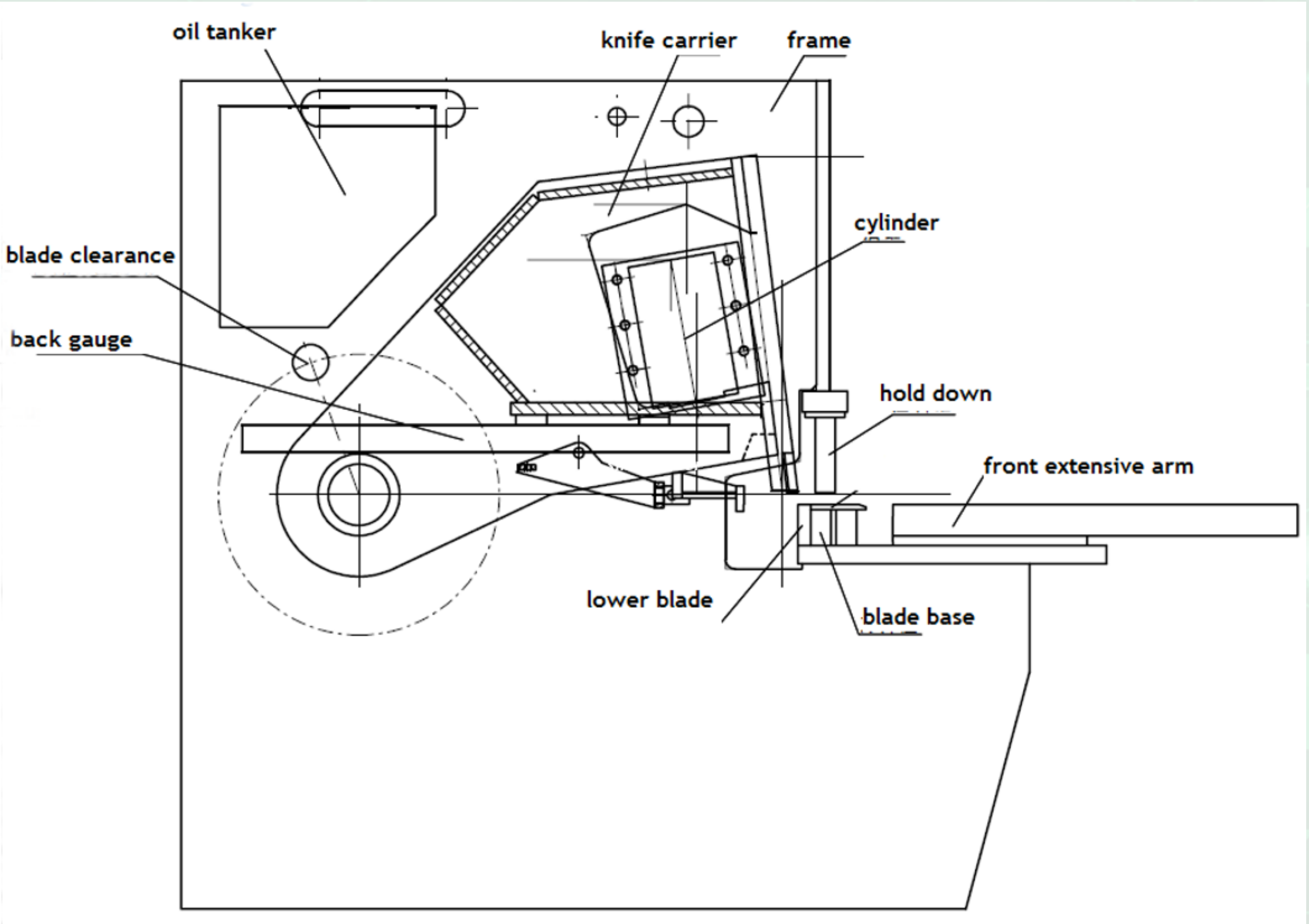
The swingbeam action using over dimensional roller bearings at the pivots, guarantees the precision of the blade gap setting. Further adjustments due to wear, as with slideway-guided machines are eliminated. The pivot roller bearing will more than last the life of the machine.

Build

Side fences, top fences, and opto-electrical guards protect against industrial hazards, with fences serving as physical barriers and opto-electrical guards using sensors to stop machinery if a beam is interrupted.

Reduced Wear

A 1000 mm squaring arm with a rule and flip-up stops provides precise measurement and positioning on our industrial mechanical guillotine, enabling accurate material alignment and repeatable cuts.



Swing-up Back Gauge Benefits

Optimum Quality of Cut

A fixed angle minimises the distortion when cutting

Precision guidance of the beam

Reliability due to fewer moving parts

Minimum maintenance required

No slideways to grease and adjust, therefore less wear

Clearance for the free fall of materials cut

Complete rigidity under extreme load

Our typical delivery, installation and training process.

Delivery

Delivery of the hydraulic guillotine is not included as standard but can be arranged for an additional fee. Offloading and positioning the machine is the customer's responsibility. However, we will provide guidance on suitable offloading methods, such as using the correct lifting equipment. If you don't have the means to offload the machine, we offer upgraded delivery options to assist with this.

Installation

Our professional installation team will promptly arrive on the agreed installation date. Typically, the commissioning of the machine will take one day, with the first half of the day being the commissioning, and the second part of the day being dedicated to your training. Our engineer will take care of everything for you in getting the machine commissioned and ready for operation, the only requirement is to ensure the machine is connected to your electrical supply.

Finance Options

Finance Options are available. Why not spread the cost of your machinery purchase? Our finance partner Percy Finance Ltd is an appointed representative of AFS Compliance Ltd which is authorised and regulated by the Financial Conduct Authority. Firm number 625035, Percy Finance Ltd is a franchisee of Asset Finance Solutions (UK) Ltd.

All quotes are subject to status - minimum trading of 2 years.

Machine Training

Our installation engineers are not only highly skilled professionals but also approachable and patient, dedicated to making your experience seamless. They provide comprehensive machinery training in a relaxed and supportive atmosphere, ensuring you feel confident and comfortable every step of the way. With their expertise and commitment to excellence, you can trust that your installation and training will be a smooth, stress-free process, setting you up for long-term success.

Software Training

We provide training for up to four operators in a calm, supportive setting. Our expert engineers tailor the training to each person's skill level, ensuring everyone can safely operate the system for production. Our goal is to equip your team with the basic knowledge and skills necessary to safely use your new machine.



Rhino

Mantech's Aftersales and Support are founded on over 25 years of experience providing machinery tools to businesses across the UK, Ireland, and Europe. We offer comprehensive support through our fully staffed 6-person service desk and a team of 15 skilled road engineers, dedicated to delivering prompt and professional assistance. All customers benefit from access to our service portal, enabling them to easily track communications, book services, and stay informed every step of the way. At Mantech, service isn't just a priority—it's the foundation of our business.

Service Desk

Our dedicated 6-person service desk is always ready to assist you with any inquiries or technical issues. With a fully staffed, office-based team, we ensure you receive prompt and reliable support whenever you need it.

Fully Manned Team

Our robust support network includes 15 skilled road engineers who are strategically positioned to provide on-site assistance across the UK, Ireland, and Europe. Whether it's installation, maintenance, or repairs, our expert team is equipped to deliver fast, professional service.

Extended Warranty

For added peace of mind, we offer extended warranty options of up to 5 years, providing you with comprehensive coverage and minimising downtime. Our warranties are designed to keep your equipment running smoothly, ensuring long-term reliability and performance.

Service Portal

Our online service portal offers convenient access for tracking communications, booking services, and monitoring the progress of your requests. It also provides a wealth of resources, including hints, tips, and guides to help you get the most out of your machinery.



Rhino